

PhotoTex™ Group Inc.

It's time to be seen- everywhere you look!

CALL YOUR REP AT GLOBAL IMAGING TO FIND OUT MORE: 800.787.9801

- **What is Photo-Tex?**

Photo Tex is a unique patented re-movable adhesive-substrate fabric material that can be printed on any inkjet printer and placed on any (non-porous) flat surface indoors or outdoors. Leave it up for a year or take it down tomorrow.

- **What makes it different from any other adhesive?**

Photo-Tex adhesive will not remove the paint off a primed wall, nor damage wallpaper when it's placed over. When removing there is a 99% certainty of no residue left behind. Photo Tex is also re-positional and re-usable and can withstand all weather conditions.

- **What other features does Photo Tex carry?**

The strength of the material makes it virtually impossible to rip or wrinkle. We use an opaque coating so that you can illuminate it with a backlight. It's so versatile it can wrap around corners or poles. It is waterproof and can be laminated - cold or liquid is recommended.

- **Who is using Photo Tex?**

It has been used for many retail businesses: McDonald's, Hampton Inn, Roots Department, Pitney Bowes, Macy's, NASCAR, NFL, to name a few. Making corporate logos, advertising products such as Polo, Clique, Corona, Miller, McDonalds, and it's perfect for political campaigns for windows and cars.

- **What equipment can use Photo Tex?**

Any Large Format Inkjet from Pigment, UV, Pigment/water based and Solvent based inks/equipment. Such as: Epson, HP, Mutoh, Mimaki, Roland. Any DI presses (Nexpress, HP, Igen) or Offset presses.

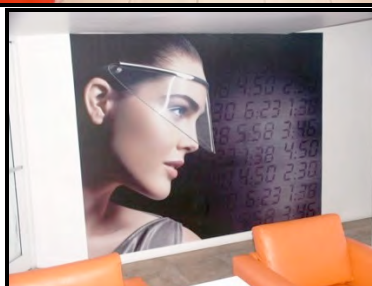


PHOTO-TEX - ADHESIVE FABRIC PAPER

This Ink-Jet Adhesive Fabric Media is compatible with pigment, water based, solvent, eco-solvent and UV-curable inks! This fabric gives you vivid, sharp print results with brilliant colors! The Adhesive is Re-movable, Re-usable and Re-positional. Photo Tex characteristics separates itself from any other product on the market that is using vinyl low tack adhesive. We stick to any non-porous flat surface (in all weather and room temperature changes), and easily remove with 99% no residue. Photo Tex does not remove paint off a primed wall, and is safe to put over wallpaper. The material does not rip or wrinkle. Results will vary on stucco (painted preferred). Not recommended for brick or cement surfaces.

Usability

- Pigment, Water based/Aqueous, solvent, eco-solvent and UV-curable ink compatible.
- Ink settings must be optimize according to ink, printer and software instructions, rip and profile for best results.
- Suitable for most large format thermal and ink-jet printers. Heat 40-50 Celsius
- Suitable for kiss/die cutting (use carbide knife) and liquid or spray protective coatings.

Indoor & Outdoor use for

• Walls	• Political Campaigns
• Windows	• Custom Cutouts
• Doors	• Advertising & Marketing

Characteristics

Material	40-45% Polyester 40-45% Pulp-Cellulose / .010mil total
Weight/Thickness with backing	557 kg/m'
Print side	Inkjet coating with low tack adhesive on back side / .006 mil
Back side	Paper backer that peels off / .004 mil
Ink Limit (according to profiles)	Pigment inks: - indoor or outdoor *UV-curable inks: - indoor and outdoor use Water based - indoor and outdoor use Dye based inks: - mixed results hanging/with heavy solids **Solvent inks: - (S) series - indoor or outdoor **Eco-solvent inks: - (S) series - Indoor Preferred *may need a 1/2" border on heavy solids to prevent curling ** keep all heat settings at 45-50 Celsius
Outdoor Warranty	6-12 months weather proof warranty, if you print with pigment inks, water based and UV inks 6-12 months weather proof warranty, if you print with solvent inks - all results may vary by region No Warranty outdoors with ECO-solvent inks - results vary

Compatibility

Inkjet Piezo (solvent ink)

• Mutoh	• Scitex
• OCE'	• Vutek
• NUR	• Roland
• Mimaki	• Grandinnovations
• Colorspan	• Seiko
• etc	

(UV-curable ink):

• Vutek	• NUR
• Durst	• Mimaki
• Zund	• Inca
• 3M	• etc

Inkjet Thermal (Pigment):

• HP
• Kodak/Encad
• Colorspan
• Canon
• etc

Inkjet Piezo (Pigment):

• Epson
• Mutoh
• Roland
• Mimaki
• etc