

GLOBAL IMAGING



THE DIGITAL IMAGE EXPERTS



Rental Catalog

PHOTOGRAPHY & LIGHTING

► Visit us at
www.globalimaginginc.com



Leaf Aptus

Beyond the big screen

At **6 x 7 cm**, the Leaf[®] Aptus **built-in LCD** is large, allowing you to easily verify image details at a glance. But that's not all. Using the LCD's **touch-screen user interface**, you can access any point on your image with one touch for quick evaluation, measuring exposure, checking the focus, and applying gray balance. **Pre-shoot settings** enable you to work efficiently, pre-naming shots, creating custom folders, embedding notes in each shot, and copyrighting your images as you shoot.



GLOBAL
imaging

Digital imaging system
integration, training and
supplies since 1995.

▶ TABLE OF CONTENTS

RENTING WITH GLOBAL	1
DIGITAL CAMERA BACKS	2 - 4
VIEW CAMERA OPTIONS.	4, 6
VIEW CAMERA LENSES	6
VIEW CAMERA ACCESSORIES	7
DIGITAL SLR CAMERA BODIES.	7
DIGITAL SLR LENSES.	7 - 8
DIGITAL SLR ACCESSORIES	8
MEDIUM FORMAT CAMERA BODIES.	9
MEDIUM FORMAT CAMERA LENSES	9 - 10
MEDIUM FORMAT ACCESSORIES	10
LIGHTING—POWER PACKS	11 - 12
LIGHTING—FLASH HEADS	12
LIGHTING—SOFT BOXES	12
LIGHTING—MODIFIERS & ACCESSORIES	14, 16
LIGHTING—GRIP EQUIPMENT AND STANDS.	18
COMPUTERS	18

IF YOU'RE GOING TO RISK YOUR LIFE

EOS 1Ds Mark II

TAKING PICTURES,

16.7 Megapixel CMOS Sensor

YOU'D BETTER NOT

32 Consecutive Frames Up To 4 fps

RISK THE PICTURES

DIGIC II Image Processor

YOU'RE TAKING.



INTRODUCING THE CANON EOS 1Ds MARK II

digital REVOLUTIONIZED photography ■ we REVOLUTIONIZED digital

Canon KNOW HOW[®]

To make equipment reservations,
phone us at 1.800.787.9802 x4

Try Before You Buy

- > Global sells new and demonstration products of all lines listed in this catalog.
For pricing please contact a sales representative at 800.787.9801.
- > 50% of rental fees will be applied to equipment price if purchased within 15 days of rental.

Rental Rates

- > Rental charges are listed per day. Weekly rates are four times the daily rate.
Monthly rates are four times the weekly rate.
- > All rentals are minimum one day.
- > Weekend rentals beginning Friday and end Monday morning by 10:00am are charged for 1.5 days.

Deposits

- > A deposit for the full replacement value of the equipment is required.
- > Deposits can be secured through Visa, MasterCard, cash or with a certificate of insurance naming Global Imaging as Loss Payee.
- > If using a certificate of insurance as deposit method, a credit card is required for deductible.
- > All rentals require a clear photocopy of the front and back of a valid drivers license and credit card.
- > See full Terms & Conditions for more information.

Insurance

- > Renter accepts full liability for any loss, damage or cost of repair.
- > Insurance coverage for all equipment is the responsibility of renter while in possession of renter and during shipping either direction.
- > A certificate of insurance naming Global Imaging as the Loss Payee is required on all rental items with a replacement value of \$8,000 or more.
- > If certificate of insurance is unavailable, renter may purchase insurance from Global Imaging for \$25 per day.

Out of Town Rentals & Shipping

- > Rental fees will be charged during equipment use plus one day for transportation.
- > Rentals are shipped both directions, overnight, insured for full replacement value at renter's expense.

Late Returns

- > Equipment will be billed at a full day rate until returned.

Availability, Reservations and Cancellations

- > To reserve equipment call Global Imaging (800)787-9802 ext 4.
- > Availability is not guaranteed. Reserve rentals in as far as advance as possible.
- > Failure to cancel a reservation within 48 hours can result in a full day rental charge and any shipping charges incurred.

Spare Lamps and Flash Tubes

- > Spare lamps and flash tubes are provided on lighting rentals. There will be a charge for these spares if lamps or tubes are not returned, or returned broken.

Renter Responsibilities

(see Terms & Conditions for Full Renter Responsibilities)

- > Besides the responsibilities listed here, a completed and signed "Global Imaging Rental Terms & Conditions" is required. For more information you can download the Terms & Conditions from our website in the Rental section: <http://www.globalimaginginc.com/services/rentals-photo.shtml>

HASSELBLAD

- Rental includes digital back, software, battery, battery charger, FireWire®, cable CF card
- Suitable for studio or location
- Live video with Hasselblad H cameras

H3D-39

Rate: \$500/day \$2000/wk



- > 39 Megapixel
- > One-shot up to 224MB / 16-Bit TIFF
- > Available for: Hasselblad H-3
- > Comes with H3 camera, prism and 80mm lens
- > FireWire® connectivity or battery/CF Card
- > Macintosh and Windows Compatible

LEAF

- Rental includes digital back, software, battery, battery charger, FireWire® cable CF card
- Medium format camera and view camera options available below
- Suitable for medium format or view camera in studio or on location
- Live video focusing and composition available with view camera option

Aptus 54 S

Rate: \$450/day \$1800/wk



- > 22 Megapixel
- > One-shot up to 126MB / 16-Bit TIFF
- > Available for: 1Mamiya 645afd, View Camera w/ Graflock adapter, live video dongle, Rollei shutter
- > FireWire® connectivity or battery/CF Card
- > Macintosh Compatible

Aptus 65 S

Rate: \$400/day \$1600/wk



- > 28 Megapixel
- > One-shot up to 159MB / 16-Bit TIFF
- > Available for: Hasselblad H-1, View Camera w/Graflock adapter, live video dongle, Rollei shutter
- > FireWire® connectivity or battery/CF Card
- > Macintosh Compatible

Aptus 75 S

Rate: \$500/day \$2000/wk



- > 33 Megapixel
- > One-shot up to 190MB / 16-Bit TIFF
- > Available for: Hasselblad H-1, View Camera w/Graflock adapter, live video dongle, Rollei shutter
- > FireWire® connectivity or battery/CF Card
- > Macintosh Compatible

PHASE ONE (P-Series)

- Rental includes digital back, software, CF card, 1-battery, charger, FireWire® reader, FireWire® cable and cleaning kit
- View camera options available on pages 4 and 7 and medium format cameras on page 11.
- 100% untethered shooting
- Equally well suited for medium format on location or studio applications

P 21+

Rate: \$350/day \$1400/wk



- > 18 Megapixel
- > One-shot up to 104MB / 16-Bit TIFF
- > Available for: Hasselblad H-1
- > Live Video
- > FireWire® connectivity or battery/CF Card
- > Macintosh and Windows compatible

P 25+

Rate: \$450/day \$1800/wk



- > 22 Megapixel
- > One-shot up to 128MB / 16-Bit TIFF
- > Available for: Hasselblad V-series, H-series & Mamiya645AFD Flexadapter 4x5 Hasselblad H-1
- > Live Video
- > FireWire® connectivity or battery/CF Card
- > Macintosh and Windows compatible

P 30+

Rate: \$400/day \$1600/wk



- > 31.6 Megapixel
- > One-shot up to 178MB / 16-Bit TIFF
- > Available for: Hasselblad H-1
- > Limited View Camera movements
- > Live Video
- > FireWire® connectivity or battery/CF Card
- > Macintosh and Windows compatible

P 45+

Rate: \$500/day \$2000/wk



- > 39 Megapixel
- > One-shot up to 224MB / 16-Bit TIFF
- > Available for: Hasselblad H-series, Flexadapter 4x5, Hasselblad H-1
- > Live Video
- > FireWire® connectivity or battery/CF Card
- > Macintosh and Windows compatible

PHASE ONE (H-Series)

- Rental includes digital back, software, FireWire® cable and cleaning kit
- Medium format camera and view camera options available below
- Capture an image digitally and transfer it directly to a computer for editing, printing, and storage
- Great studio camera

H 25

Rate: \$350/day \$1400/wk



- > 22 Megapixel
- > One-shot up to 128MB / 16-Bit TIFF
- > Available for: Hasselblad V-series, Sinar 4x5
- > FireWire® connectivity
- > Macintosh and Windows compatible

H 20

Rate: \$300/day \$1200/wk



- > 16 Megapixel
- > One-shot up to 96MB / 16-Bit TIFF
- > Available for: Hasselblad V-series, Sinar 4x5
- > FireWire® connectivity
- > Macintosh and Windows compatible

SINAR

P2 Camera W/Lens

Rate: \$80/day \$320/wk

- > Complete with 1 lens - see list below
- > Copal Shutter or Lens in Rollei Shutter (Requires Rollei Controller)

CAMBO

Wide DS Kit w/35mm Lens for H mount

Rate: \$75/day \$300/wk

- > Complete with 35mm lens



PHASE ONE

Flexadapter

Rate: \$20/day \$80/wk

- > Connect any Mamiya 645AFD or Hasselblad V-Series Hasselblad H-1 back to your Sinar 4x5 view camera or Cambo 4x5 view camera
- > Auto 1, 2 or 3 shot stitching capability with Phase backs

HASSELBLAD



For over fifty years now, **Hasselblad** has been devoted to a very simple task: *to producing the finest photo imaging equipment known to man.*

Today **Hasselblad** provides complete digital solutions including precision lenses, award winning camera systems, high resolution digital backs, integrated digital solutions and the finest film scanners in the world.

If your needs require a rental for a few days or an investment in cutting-edge technology, be sure **Hasselblad** is your professional image capture solution.



▶ VIEW CAMERA OPTIONS (CONT.)

LEAF

Live Video Kit for View Camera Rate: \$15/day \$60/wk

- > Use the Aptus back on a 4x5 view camera with Live Video
- > Includes adapter plate, live video dongle and sync cable (Requires Graflok back on view camera for adaptation)

Rollei Shutter Controller Rate: \$15/day \$60/wk

- > Works with Leaf Aptus Backs (see live video kit) and Hasselblad CF Backs adapted to view cameras.

▶ VIEW CAMERA LENSES

SINAR

- > Limited number of Sinaron digital lenses in DB mounts.
Call for details.

SCHNEIDER

Digitar 28mm f2.8 Copal 0 Lens Rate: \$35/day \$140/wk

- > Lens mounted Copal 0 shutter
- > Requires 0 lens board
- > Requires Wide Angle Bellows

RODENSTOCK

Digitar 35mm f4.5 Copal 0 Lens Rate: \$35/day \$140/wk

- > Lens mounted Copal 0 shutter
- > Requires Copal 0 recessed lens board
- > Requires Wide Angle Bellows

Digitar 90mm f5.6 Copal 0 Lens Rate: \$35/day \$140/wk

- > Lens mounted Copal 0 shutter
- > Comes mounted in Sinar p2 board or requires 0 lens board

Digitar 135mm f5.6 Copal 0 Lens Rate: \$35/day \$140/wk

- > Lens mounted Copal 0 shutter
- > Requires Copal 0 lens board

Digitar 150mm f5.6 Copal 0 Lens Rate: \$35/day \$140/wk

- > Lens mounted Copal 0 shutter
- > Comes mounted in Sinar p2 board or requires 0 lens board

VIEW CAMERA ACCESSORIES

SINAR

Wide Angle Bellows for P2 Rate: \$15/day \$60/wk

Ultra-Wide Angle Bellows for P2 Rate: \$15/day \$60/wk

Basic Lens Shade for P3 Rate: \$10/day \$40/wk

- > Filter Holder 100 uses three rings as shade
- > Mounts to lens using Adapter ring

Extension Rail 6" Rate: \$5/day \$20/wk

Multi-purpose Standard Rate: \$10/day \$40/wk

Bellows Hood Mask II Rate: \$5/day \$20/wk

- > Requires Multi-purpose Standard to use

Deluxe Lens Shade for p2 Rate: \$25/day \$100/wk

- > Includes Multi-purpose Standard, Wide Angle Bellows, Bellows Holder, Filter Rod, and Bellows Hood Mask II

DIGITAL SLR CAMERA BODIES

CANON

1Ds Mark II Body Rate: \$200/day \$800/wk



- > 16.7 Megapixel
- > Full Frame
- > Body comes complete with 1 battery, charger, 1 – 1GB CF card, software and cables

DIGITAL SLR LENSES

CANON

EF 16-35mm f2.8L USM Lens Rate: \$25/day \$100/wk

- > Lens Shade

EF 28-70mm f2.8L USM Lens Rate: \$25/day \$100/wk

- > Lens Shade

EF 70-200mm f2.8L IS USM Lens Rate: \$25/day \$100/wk

- > Lens Shade and Case

▶ DIGITAL SLR LENSES (CONTINUED)

NIKON

Nikkor 17-35 f2.8 ED-LF Zoom Rate: \$25/day \$100/wk

> Lens Shade, UV Filter and Case

Nikkor 28-70 f2.8 ED Rate: \$25/day \$100/wk

> Lens Shade, UV Filter and Case

Nikkor 70-200 f2.8 ED VR Rate: \$25/day \$100/wk

> Lens Shade, UV Filter and Case

▶ DIGITAL SLR ACCESSORIES

CANON

Speedlite 550EX Rate: \$15/day \$60/wk

> On camera flash with E-TTL metering
> Requires 4-AA batteries

Speedlite 580EX Rate: \$15/day \$60/wk

> On camera flash with E-TTL metering
> Requires 4-AA batteries

Remote Switch RS-80N3 Rate: \$6/day \$24/wk

NIKON

SB800 Speedlite Rate: \$15/day \$60/wk

> On camera flash with E-TTL metering
> Requires 4-AA batteries

SANDISK

1GB Extreme Compact Flash Memory Card Rate: \$7/day \$35/wk

> 66x Read, 60x Write
> Rated at +185F/85C to -13F/25C

FireWire® Card Reader Rate: \$5/day \$20/wk

▶ MEDIUM FORMAT CAMERA BODIES

HASSELBLAD H-SERIES

H1 or H2 Body

Rate: \$50/day \$200/wk

- > Includes viewfinder
- > Requires 3-CR123 batteries

HASSELBLAD V-SERIES

500ELM Body

Rate: \$35/day \$140/wk

- > Recommend viewfinder below
- > Comes with battery charger

MAMIYA

645AFD Body

Rate: \$35/day \$140/wk

- > Complete with built-in AE prism viewfinder and winder
- > Requires 6-AA batteries

▶ MEDIUM FORMAT CAMERA LENSES

HASSELBLAD H-SERIES

HC 28mm Lens

Rate: \$50/day \$200/wk

- > Includes lens shade
- > Only works with H3D

HC 35mm f2.3.5 Lens

Rate: \$55/day \$220/wk

- > Includes lens shade

HC 50mm f3.5 Lens

Rate: \$55/day \$220/wk

- > Includes lens shade

HC 50-110mm f3.5-4.5 Lens

Rate: \$75/day \$300/wk

- > Includes lens shade

HC 80mm f2.8 Lens

Rate: \$25/day \$100/wk

- > Includes lens shade

HC 120mm f4 Macro Lens

Rate: \$55/day \$220/wk

- > Includes lens shade

HC 150mm f3.2 Lens

Rate: \$55/day \$220/wk

- > Includes lens shade

HASSELBLAD V-SERIES

50mm Distagon CF f4 T* Lens Rate: \$25/day \$100/wk
 > Includes lens shade

80mm Planar C f2.8 T* Lens Rate: \$25/day \$100/wk
 > Includes lens shade

120mm Makro-Planar CF f4.0 T* Lens Rate: \$25/day \$100/wk
 > Includes lens shade

MAMIYA 645AFD

AF 35mm f3.5 Lens Rate: \$25/day \$100/wk
 > Includes lens shade

AF 80mm f2.8 Lens Rate: \$25/day \$100/wk
 > Includes lens shade

MF 120mm f4 Macro Lens Rate: \$25/day \$100/wk
 > Includes lens shade

AF 55-110mm f4.5 Lens Rate: \$30/day \$120/wk
 > Includes lens shade

HASSELBLAD H-SERIES

HV90x Prism Viewfinder Rate: \$15/day \$60/wk
 for H1 or H2
 > AE metering prism

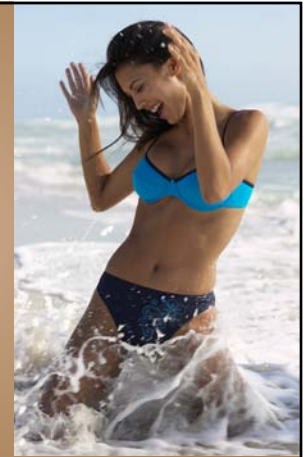
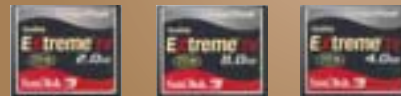
HASSELBLAD V-SERIES

PM45 Prism Viewfinder for V-series Rate: \$10/day \$40/wk
 > Non-metering 45 prism

SanDisk Extreme IV

*Superior Performance for
 Advanced Digital Photographers*

- Read and write performance of 40MB/sec with ESP Technology
- Extended temperature testing (-25 to 85 C)
- Shock-vibration tested (RTV silicon)
- Water resistance
- Included RescuePRO Deluxe™ data recovery SW and premium travel case



BRONCOLOR

Grafit A2 Power Pack

Rate: \$65/day \$260/wk



- > 1600 watts per second
- > Microprocessor controlled
- > 3 lamp base connections
- > Stabilized color temperature on 2 main connections
- > Symmetrical and asymmetrical output distribution
- > 6.7 f-stop range in 1/10 stop increments
- > Flash duration to 1/6000 of a second
- > Includes Power Cord and Sync Cord
- > Controllable flash duration

Grafit A4 Power Pack

Rate: \$100/day \$400/wk

- > 3200 watts per second
- > Microprocessor controlled
- > 3 lamp base connections
- > Stabilized color temperature on 2 main connections
- > Symmetrical and asymmetrical output distribution
- > 6.7 f-stop range in 1/10 stop increments
- > Flash duration to 1/6000 of a second
- > Includes Power Cord and Sync Cord
- > Controllable flash duration

Verso A2 Power Pack

Rate: \$75/day \$300/wk



- > 1200 watts per second
- > 3 lamp base connections
- > Symmetrical and asymmetrical distribution
- > 7 f-stop range in 1/10 stop increments
- > Fast recycle time
- > AC Power or Power Dock battery
- > Modeling light on AC and battery
- > Includes Power Cord and Sync Cord

Verso Power Dock

Rate: \$25/day \$100/wk

- > Battery Power for Verso Pack
- > Built in Charger
- > 300 to 50,000 flashes per charge

PROFOTO

D4 – 2400WS Power Pack

Rate: \$65/day \$260/wk



- > Includes Power Cord and Sync Cord

LIGHTING - POWER PACKS

PROFOTO

D4R 2400ws Generator

Rate: \$65/day \$260/wk



- > 4 lamp heads can be independently controlled in full or 1/10 f/stop increments over the 8-stop range
- > Flash duration to 1/4500 of a second
- > Constant color temperature flash-to-flash
- > Control via USB connection
- > Built-in radio with 32 channel / 4 zone for remote operation
- > Complete with power cable, sync cord, USB interface cable and Macintosh software

Pro-7a 2400ws Generator

Rate: \$60/day \$240/wk



- > Symmetrical / asymmetrical light distribution to three lamphead outlets
- > Flash duration from 1/1600 - 1/8000 of a second
- > Fast recycling time from 0.12-1.4 s
- > 6-stop range in 1/3 and 1/6 step increments
- > Constant colour temperature at all power settings
- > Complete with power cable and sync cord

Pro-7b 1200ws Generator

Rate: \$75/day \$300/wk



- > 250 full power 1200 Ws flashes per battery
- > Asymmetrical or symmetrical power distribution
- > Flash duration down to a 1/3000 of a second
- > Recycling time from 0.09-2.8 s
- > Full 7 f-stop range in 1/6 step adjustments
- > Complete with power cable and sync cord

LIGHTING - FLASH HEADS

PROFOTO

Pro Head - 4800ws

Rate: \$20/day \$80/wk



- > Thermostatically controlled 2-speed fan for efficient cooling
- > Delivered with zoom reflector, quartz flash tube, 250 W halogen lamp, removable frosted glass cover, protective transportation cap, stand adapter & 13 ft. lamp cable

Pro-B Head - 1200ws

Rate: \$20/day \$80/wk



- > Reflectors designed to slide back and forth on the head allowing you to zoom on and out
- > Delivered with disc reflector, uncoated flash tube, 100 W halogen lamp, removable frosted glass cover, protective transportation cap, stand adapter & 13 ft. lamp cable

LIGHTING - SOFT BOXES

5' Octagon Softbox

Rate: \$40/day \$160/wk



- > Delivered with inner and front diffuser, steel rods & transport bag

PROFOTO

Magnum Reflector

Rate: \$10/day \$40/wk



- > Output at 2m with 2400 Ws

Softlight Reflector f/Ringflash

Rate: \$15/day \$60/wk



- > Softer, shadow-free “beauty effect” by enlarging the ring flash area

Diffuser

Rate: \$5/day \$20/wk

- > For all Profoto Softlight Reflectors, reduces the light output by 1/3 f/stop.

Grid & Filterholder Kit

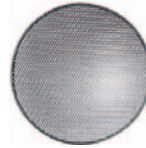
Rate: \$20/day \$80/wk



- > Includes Filter Cassette and Diffusion Filter

Honeycomb Grid f/Softlight Reflectors

Rate: \$15/day \$60/wk



- > Provides a beam spread of 25°

Honeycomb Grids

Rate: \$10/day \$40/wk



- > Available in 5°, 10° and 20°

Lamp Extension Cable

Rate: \$5/day \$20/wk



- > A head-to-pack cable that extends the reach of a Profoto Pro7 or Pro7B flash head by 16 feet

▶ LIGHTING-POWER PACKS (CONTINUED)

D4 Kit – 2400WS Power Pack Rate: \$120/day \$480/wk

- > Complete kit includes 1-Profoto D4 2400 generator, 3-Acute2/D4 heads, 3-compact stands, 1-2x2 softbox, 1-2x3 softbox, 2-speedrings, 1-white umbrella, 1-Tenba case CC15 and 1-Tenba case CC28, power cord and sync cord

▶ LIGHTING-FLASH HEADS

BRONCOLOR

Unilite - 1600WS Flash Head Rate: \$25/day \$100/wk

- > With 15' cable

Unilite 3200WS Flash Head Rate: \$30/day \$120/wk

- > With 15' Cable

Pulso F 3200ws Flash Head Rate: \$35/day \$140/wk

- > Focusable lamp head

Ringflash C or P Rate: \$65/day \$260/wk

- > C comes with bracket for use with camera
- > P comes with bracket for use on Para

PROFOTO

Acute2/D4 Head Rate: \$20/day \$80/wk

- > Includes 15' cable

▶ LIGHTING-SOFT BOXES

BRONCOLOR

EM 80x80 (32"x32") Rate: \$15/day \$60/wk

- > Includes Ring

CHIMERA

36"x48" M Softbox Rate: \$15/day \$60/wk

- > Includes speedring for Broncolor or Profoto

24"x36" S Softbox Rate: \$15/day \$60/wk

- > Includes speedring for Broncolor or Profoto

PROFOTO

2x2 softbox Rate: \$15/day \$60/wk

- > Includes speedring
- > For Profoto only

2x3 softbox Rate: \$15/day \$60/wk

- > Includes speedring
- > For Profoto only

Profoto D4

THE MOST CONSISTENT
AND ACCURATE PACK
AVAILABLE **TODAY**



8 Westchester Plaza, Elmsford, NY 10523

Phone: 914-347-3300

Toll free Fax: 800-321-2205

www.Profoto-USA.com

Iman by Markus Klinko & Indrani ...



... Light by broncolor Para FB

To put Iman's beauty in the right light, Markus Klinko & Indrani chose the new focusable broncolor Para FB. It delivers light in total perfection: from directed to extremely soft, for creations with high color saturation, optimized contrast and gentle shadows.

broncolor Para FB - Inspiration and Emotion

Sinar Bron
IMAGING
www.sinarbron.com

Discover the Para 170 FB, Para 220 FB and Para 330 FB. Contact your authorized Sinar Bron Dealer or call us today at 800.456.0203.



broncolor
THE LIGHT

LIGHTING-MODIFIERS & ACCESSORIES (CONT.)

p70 Grid Kit

> Fits p70 reflector 3 grids

Rate: \$15/day \$60/wk

Softlight Reflector for Ringflash

> Broad 20" reflector-great beauty light

Rate: \$15/day \$60/wk

Ringflash Grid Kit

> Fits Ringflash C 3 grids

Rate: \$15/day \$60/wk

Bracket for C or P Ringflash

> Converts Ringflash to C or P depending on setup

Rate: \$10/day \$40/wk

MATTHEWS

12x12 Snap-a-Part Frame

Rate: \$25/day \$100/wk

12x12 Artificial Silk

Rate: \$25/day \$100/wk

8x8 Snap-A-PartFrame

Rate: \$20/day \$80/wk

8x8 Artificial Silk

Rate: \$20/day \$80/wk

8x8 Silver Matthflector

Rate: \$30/day \$120/wk

8x8 Bleached Muslin

Rate: \$20/day \$80/wk

POCKET WIZARD

Pocket Wizard Multi-Max Transceiver

Rate: \$25/day \$100/wk

> For Profoto "R" packs only

> Includes cable

> Use with D4 pack

Pocket Wizard Plus Kit

Rate: \$25/day \$100/wk

> Includes transmitter, receiver and cables

PROFOTO

Softlight Reflector White

Rate: \$25/day \$100/wk

> Includes diffuser

WESTSCOTT

Scrim Jim 72x72 Large Frame

Rate: \$20/day \$80/wk

Scrim Jim Large 1¹/₄ -Stop Fabric

Rate: \$15/day \$60/wk

Scrim Jim Large Silver/ White Fabric

Rate: \$15/day \$60/wk

Scrim Jim Clamp

Rate: \$5/day \$20/wk



The
Digital
Image:

Capture it.
Manage it.
Print it.
Finish it.

▶ LIGHTING-GRIP EQUIPMENT & STANDS

BOGEN

Bogen B205 Stand Rate: \$20/day \$80/wk

> Cranking stand for Para 220

Bogen 15lbs Sand Bag Rate: \$3/day \$12/wk

MATTHEWS

Matthews 40" C Stand Rate: \$5/day \$20/wk

> Complete with grip head and 40" arm

Matthews Baby Kit Stand Rate: \$5/day \$20/wk

> Light weight location stand

Medium Roller Overhead Stand Rate: \$15/day \$60/wk

Beefy Baby Dbl Riser RM Leg Rate: \$10/day \$40/wk

2 1/2 " Grip Head Rate: \$5/day \$20/wk

▶ COMPUTERS

APPLE

Apple Mac G5 Power PC Rate: \$200/day \$800/wk

- > Dual 2.0GHz, 160GB Serial ATA Drive, 1.5GB SDRAM, DVD-R, OSX, Photoshop CS
- > Comes with 20" Cinema Display, keyboard and mouse
- > Loaded with CaptureOne Pro and latest camera back software
- > Loaded with Photoshop CS2

Apple iMac 20" G5 Power PC Rate: \$150/day \$600/wk

- > 2.1 GHz, 232GB Serial ATA Drive, 1.5 GB SDRAM, DVD-R, OSX, Photoshop CS2
- > Comes with keyboard and mouse
- > Loaded with CaptureOne Pro and latest camera back software
- > Loaded with Photoshop CS2

Apple 15" Powerbook G4 Rate: \$75/day \$300/wk

- > 1 GHz Power PC G4, 1GB SDRAM, 55GB Serial ATA Drive, DVD-R, OSX, Photoshop CS
- > Comes with AC Power, spare battery, mouse, and case
- > Loaded with CaptureOne Pro and latest camera back software
- > Loaded with Photoshop CS2

Apple 20" Cinema Display Rate: \$35/day \$140/wk

Apple DVI to ADC Monitor Adapter Rate: \$10/day \$40/wk

- > Use to power Cinema Display with laptop

Phase One P⁺

Redefining your limits

The next generation of powerful, precision digital backs. Phase One's P⁺ series opens new opportunities for the world's leading photographers by raising the standards for digital image quality, flexibility, speed and durability.

Opticolor⁺ [patented]
Best color reproduction ever

Dynamic⁺ [patented]
Up to ISO 1600 capacity

XPose⁺ [patent pending]
Up to one-hour extreme exposures

Live Preview
Crisp, vivid color viewing

Higher Speed
Up to 70 frames per minute





Corporate Headquarters

2011 Cherry Street, Suite 116

Louisville, CO 80027

Tel: 303.673.9773

Toll Free: 800.787.9801

Fax: 303.673.9923

Global Imaging Dallas

1130 Dragon Street, Suite 180

Dallas, TX 75207

Toll Free: 800.787.9802

www.globalimaginginc.com



PRINTERS
WITH A BUILT-IN EYE
FOR COLOR.
JUST LIKE YOU.



**HP Designjet Z Series
Photo Printers:**

Breakthrough color, true confidence, no limits. HP Designjet Z Series Photo Printers have a built-in spectrophotometer that analyzes color and calibrates it to match the media used. So quality stays consistent from print to print, media to media. And creating ICC profiles is quick and easy. 11 ink colors and a gloss enhancer, and you have a total package.

These are not just new printers, they're a revolution in printing. Be part of it.

www.globalimaginginc.com