



www.REXframe.com



"REXframe® ...
the best way to attract
attention and achieve
the look we wanted."



CONTENTS

| | |
|--------------------------------|---------|
| THE REXframe® SYSTEM | 04 |
| THE PROFILES | 05 |
| PROFILES | |
| Universal Retro | 06 |
| System Adapters | 07 |
| Single Sided | 08 |
| Double Sided | 09 |
| Shapes & Forms | 10 |
| Lightbox | 11 |
| Support & Structure | 12 |
| D'LiTe Range | 13 |
| LED LIGHTS | 14 |
| ACCESSORIES TOOLS LIGHTING | 15 - 17 |
| ASSEMBLY | 18 |
| GALLERY | 19 |



THE REXframe® SYSTEM

The REXframe® system: **simple, versatile, clever and cost effective**

REXframe® profiles can be assembled in just a few steps and are available in a range of profiles or custom designed to maximise the use of your space.

The REXframe® components: **lightweight aluminium frame and fabric prints**

The sturdy aluminium frame is assembled using a simple connector system and has the option of high powered LED lighting. The fabric prints have a rubber lip which is easily inserted into the frame. The elasticity of the fabric ensures a perfect fit.

The REXframe® fabrics: **rich, vibrant, colourfast and machine washable**

ADVANTAGES

Minimal freight costs

REXframe® are shipped unassembled; there is no bulky packaging and lower costs for freight

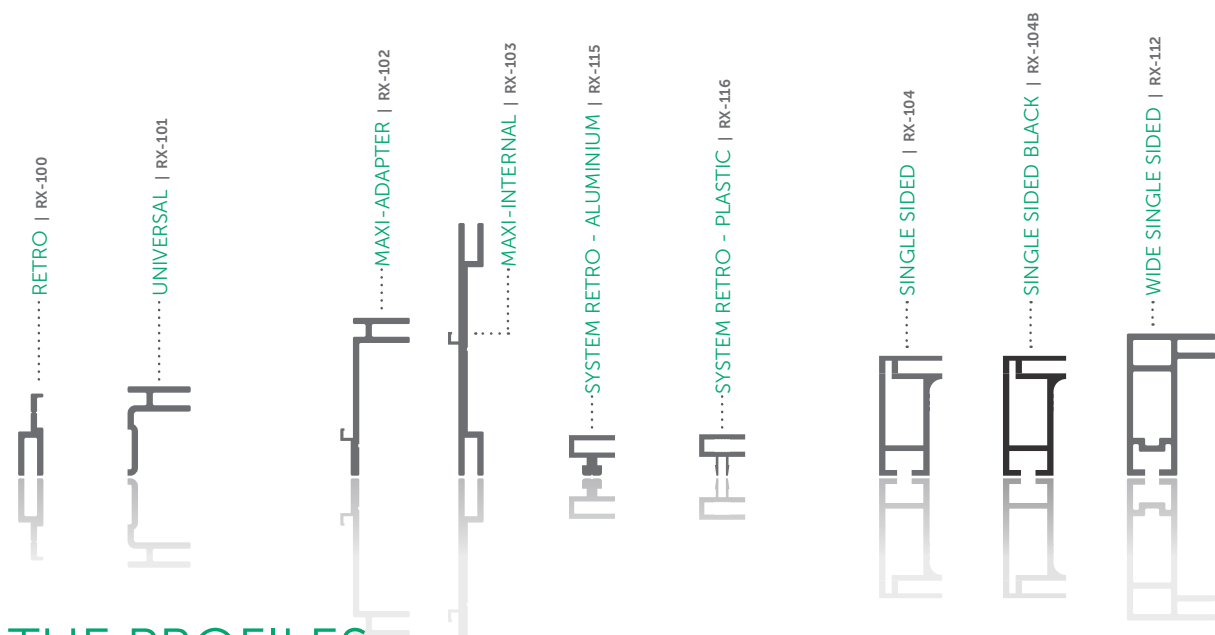
Simple assembly

The REXframe® assembly system is designed for simplicity. They can often be assembled within minutes without tools or training.

Easy to change the fabric image

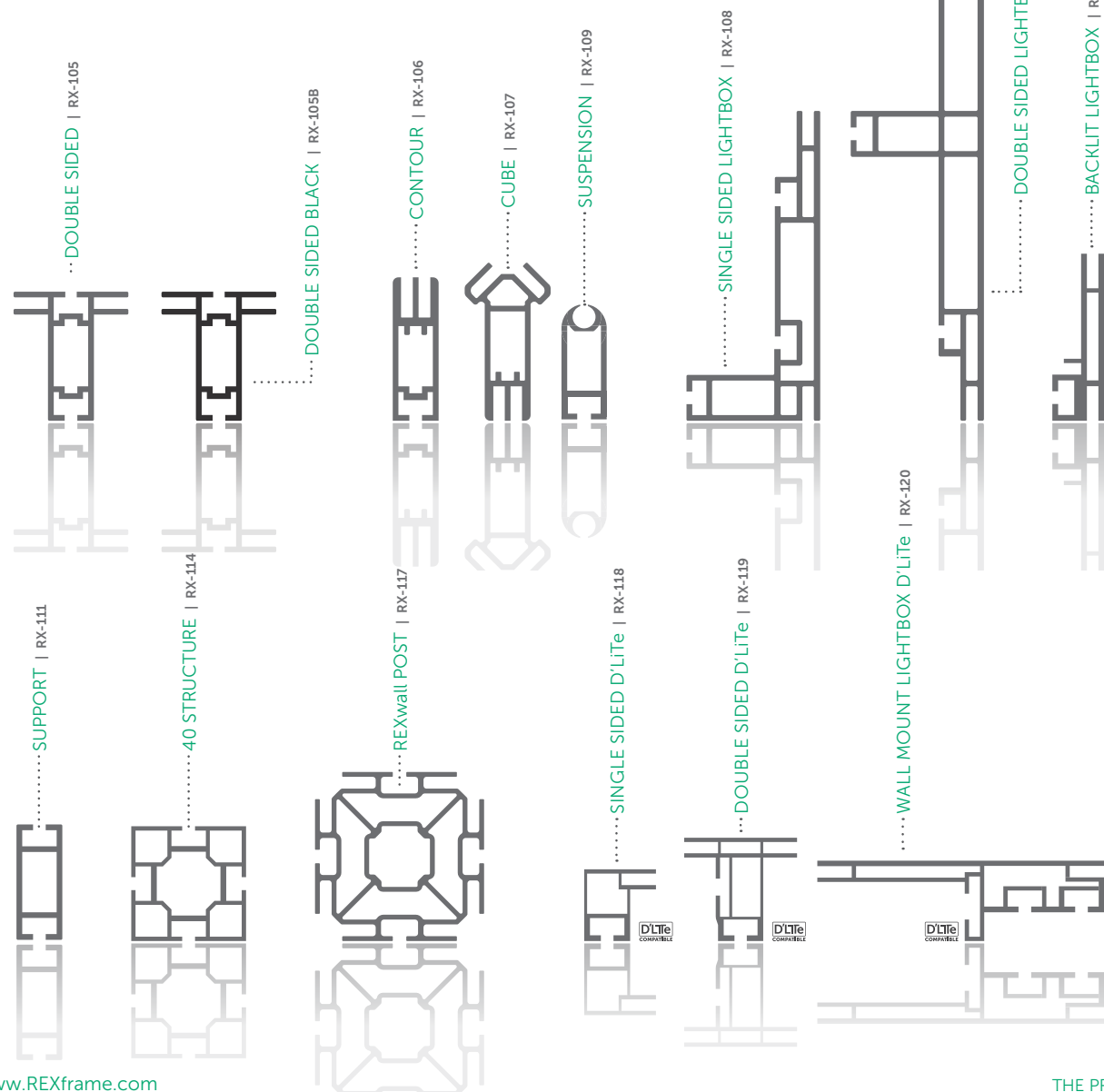
You can create a whole new look by simply changing the fabric image in your frame.

Machine washable fabrics



THE PROFILES

REXframe® comes in a range of profiles or they can be custom made to meet your needs. Most profiles Can be curved .





UNIVERSAL RETRO REXframe® RX-100 | RX-101

The versatile and practical Universal and Retro profiles are a great introduction to the REXframe easy solution system.

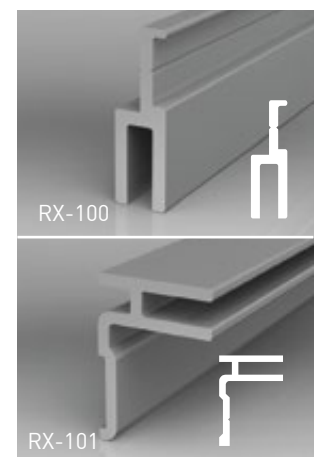
Just simply screw onto an existing surface, inside a cavity or onto existing light box frame to convert traditional printing into a fabric graphic alternative.

These profiles can be used for a wide variety of situations. An upgrade to an easy and cost effectively option, offering a whole new look.

Quick, tool free fabric graphic changes in seconds.

KEY FEATURES

- No brackets required
- Screws directly into substrate
- Can be curved





SYSTEM ADAPTERS REXframe® RX-102 | RX-103 | RX-115 | RX-116

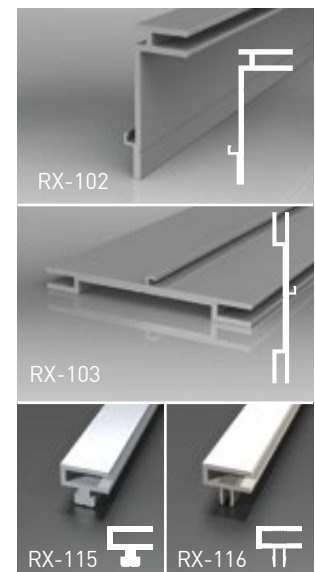
The system adapters profiles are designed to convert common and existing systems to the REXframe solution.

Simply clip or slide into the track of other popular systems without having to rebuild or redesign your creation. It converts your rigid printed panel into a new look vibrant fabric graphic. Seamless, easy to ship, install and replace.

REXframe, every fabric graphic solution covered!

KEY FEATURES

- Simply clips into or slides into the track of other popular systems
- Can be illuminated
- Can conceal existing systems





SINGLE SIDED REXframe® RX-104 | RX-104BK | RX-112 | RX-118

REXframe single-sided options are the simplest of all the profiles.

With a lightweight aluminium frame and custom printed fabric, the frame is assembled prior to installation and can be wall mounted or suspended.

It offers stylish signage simply.

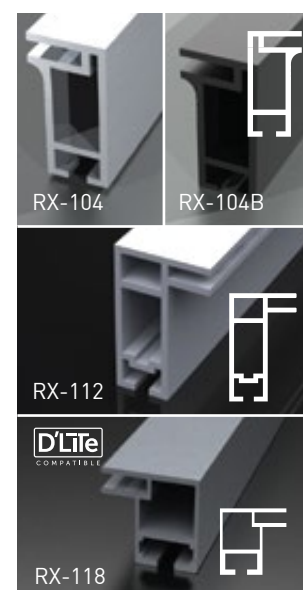
As a back wall in an exhibition or in retail space, on stage or for directional signage, the Single Sided REXframe has many applications and its true beauty is in the ease of changing the fabric print. This is a great option if you need to change the scenery with the season or to change the look of your space.

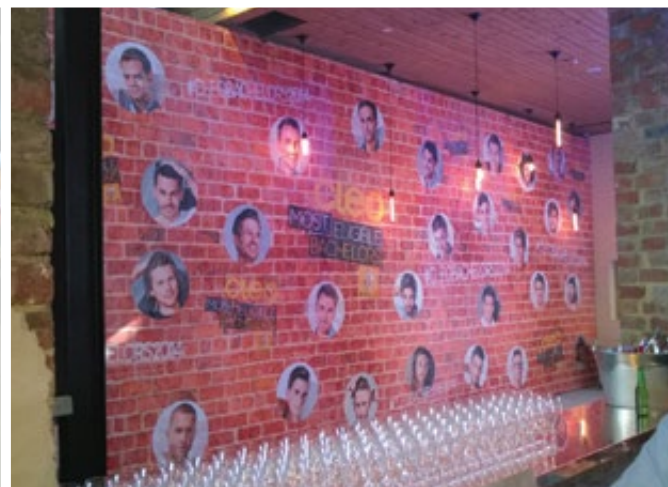
KEY FEATURES

Wall mounted or suspended

Can be curved

Easy installation using minimal clips into substrate





DOUBLE SIDED REXframe® RX-105 | RX-105BK | RX-119

Freestanding or suspended, the Double Sided REXframe profiles can display the same or different artwork on each side. Perfect for media walls, stage backdrops, petitioning a room, directional or promotional signage, this profile is a great solution for public space with high traffic.

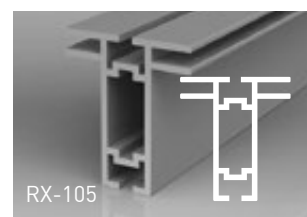
The freestanding Double Sided REXframe has two sturdy feet to provide the required stability for any event and can be easily assembled, dismantled and stored.

Offering “more bang for your buck”, this double sided option gets double the attention.

KEY FEATURES

Can be suspended or freestanding using clip on feet

Can be curved





SHAPES & FORMS

REXframe® RX-106 | RX-107 | RX-109

Creating 3D shapes are a breeze when utilising these unique profiles in conjunction with the REXframe patented knuckles. It is the ultimate in style and versatility.

Most effective when it's large and suspended with more than twice the capacity for branding opportunities.

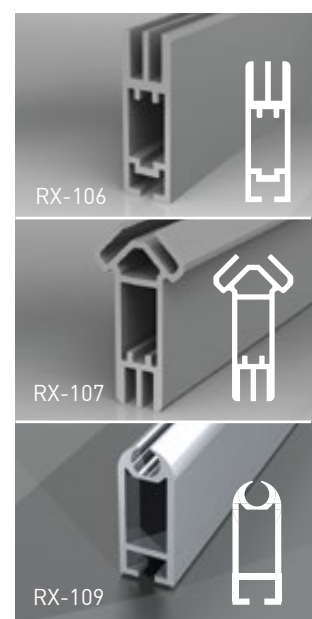
A perfect solution for events, exhibition and maximum retail impact.

REXframe, thinking outside the box!

KEY FEATURES

Can be suspended or freestanding

Can be curved





LIGHTBOX REXframe® RX-108 | RX-110 | RX-120 | RX-121

The REXframe Lightbox profiles use low voltage LED lighting and create a beautiful, eye catching effect at any event, exhibition or retail environment.

The LED lighting provides bright, even illumination with long life and low power consumption. The 24 volt LED modules simply clip into the frame and are easily removed when dismantling. As with all REXframe systems, the print can be easily changed to match the season, event or promotion.

Available in double sided, single sided, slim line and the ADA compliant D'Lite option.

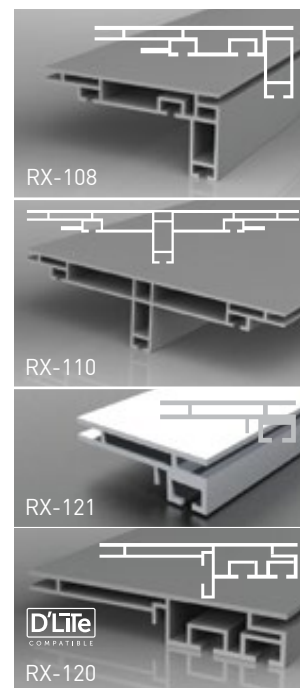
The Light Box is brilliant and brightens up any space simply and tastefully.

KEY FEATURES

Illuminated using high powered 24 volt LED modules

Can be suspended or freestanding using clip on feet

Can be curved





SUPPORT & STRUCTURE REXframe® RX-111 | RX-114 | RX-117

Building large structures or a simple freestanding 'step and repeat' the support and structural profile range puts REXframe in a league of its own.

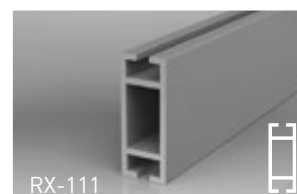
Simply adding these engineered structural profile gives the added ability to build REXframe to impressive proportions.

REXframe thinking of everything.

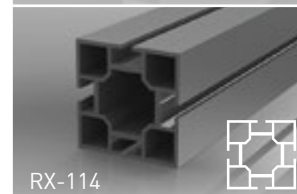
KEY FEATURES

Clips into most profiles using REXframe locks

Can be curved



RX-111



RX-114



RX-117



Single Sided D'LiTe
attached to wall



Double Sided D'LiTe
Free Standing

REXframe D'LiTe Range

The REXframe D'LiTe Range is specifically designed for the US market to meet demand for high volume retail rollouts.

REXframe D'LiTe Range is lighter weight, lower cost and easy to install.

It's perfect for single and double sided installations and designed with an easy clip system so there's no need to drill holes for elbows and joiners.

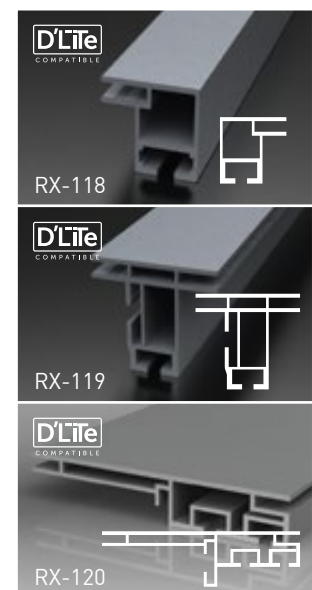
D'LiTe is compatible with selected REXframe accessories.

KEY FEATURES

Light Weight

Ideal for large rollout projects

A cost effective alternative





LED LIGHTS

REXframe lightboxes are available in Edge lit or the LaddeREX System.

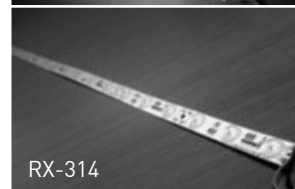
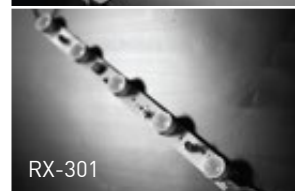
These are designed to ensure intense and uniform illumination of the signs, with the additional benefit of long life and low power consumption. LED lights are the smart lighting choice, giving better results at a fraction of the energy cost.

LED lighting modules are simply clipped into the frame and easily removed when dismantling.

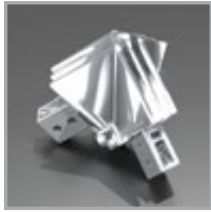
LED saves power and the environment.

KEY FEATURES

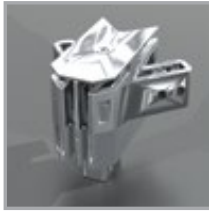
- Long life, over 50,000 hours
- Low electrical usage with up to 80% less power costs
- High brightness of approximately 720 net Lumens per module
- 24 volt LED modules that simply clip into the frame



SINGLE SIDED
KNUCKLE | RX-200



DOUBLE SIDED
KNUCKLE | RX-202



STANDARD
ELBOW | RX-203



HEAVY DUTY
ELBOW | RX-204



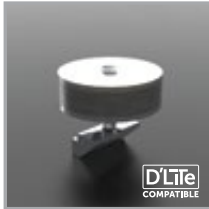
HEAVY DUTY
JOINER | RX-205



T-NUT | RX-206



KNURLED NUT | RX-207



WALL CLIP | RX-208



EYE BOLT | RX-209



U BOLT | RX-210



40 STRUCTURE
LOCK | RX-211



90° LOCK | RX-212



45° LOCK
(RIGHT) | RX-213-R



45° LOCK
(LEFT) | RX-213-L



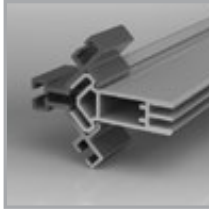
HEAVY DUTY
FEET | RX-216



REXwall
KNUCKLE | RX-220



CUBE
CLAMP | RX-222



SILICON RUBBER
STRIP | RX-223



CORNER
BRACE | RX-224



FLAT ELBOW | RX-225



STANDARD
JOINER | RX-226



105 BRACKET | RX-227



STANDARD
FEET | RX-228



COUPLING
BOLT | RX-229



TOOL FREE
ELBOW | RX-230



TOOL FREE
JOINER | RX-231



105 LOCK
KNUCKLE | RX-232



ACCESSORIES

108 CUSTOM
CORNER KIT | RX-233



110 CUSTOM
CORNER KIT | RX-234



FLAT FEET | RX-235



L SHAPED FEET | RX-236



L SHAPED FEET
(BLACK) | RX-236B



OBSTUSE ANGLE
'WING' KIT | RX-241



ACUTE ANGLE 'DISC'
KIT | RX-242



RIGGING PROFILE
RING | RX-243



HEAVY DUTY
T-NUT | RX-244



108 CORNER
KNUCKLE | RX-246



110 CORNER KNUCKLE | RX-247



REXkey Kit | RX-404



DRILL GUIDE | RX-405



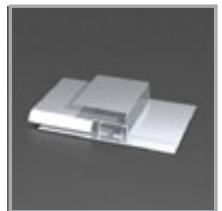
KNUCKLE DRILL
BIT 8mm | RX-406



LOCK DRILL
BIT 13mm | RX-407



GASKET SEWING
GUIDE | RX-408



SAMPLE KIT | RX-409



POS KIT | RX-500



TOOLS

9-LIGHT
MODULE | RX-300



9-LIGHT DIMMABLE
MODULE | RX-300-DIM



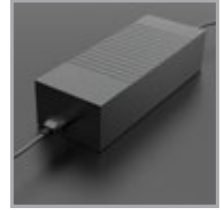
5-LIGHT
MODULE | RX-301



5-LIGHT DIMMABLE
MODULE | RX-301-DIM



RX-303
TRANSFORMER | RX-303



3" CONNECTOR
| RX-304



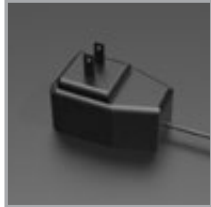
12" CONNECTOR
| RX-305



6ft CONNECTOR
| RX-306



SINGLE MODULE
TRANSFORMER | RX-307



HALOGEN ARM
LIGHT | RX-308



LED ARM
LIGHT | RX-309



PARALLEL
CONNECTOR | RX-310



RGB LED 5-LIGHT
MODULE | RX-311



RGB STANDARD
CONTROLLER | RX-312



RGB PROGRAMMABLE
CONTROLLER | RX-313



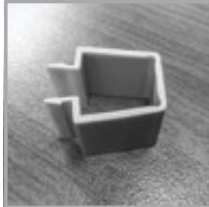
LadderREX | RX-314



SINGLE WIRE
CLIP | RX-316



MULTI WIRE
CLIP | RX-317



10/6 - MODULE
HARNESS | RX-318



20/12 - MODULE
HARNESS | RX-319



30/18 - MODULE
HARNESS | RX-320



40/24 - MODULE
HARNESS | RX-321



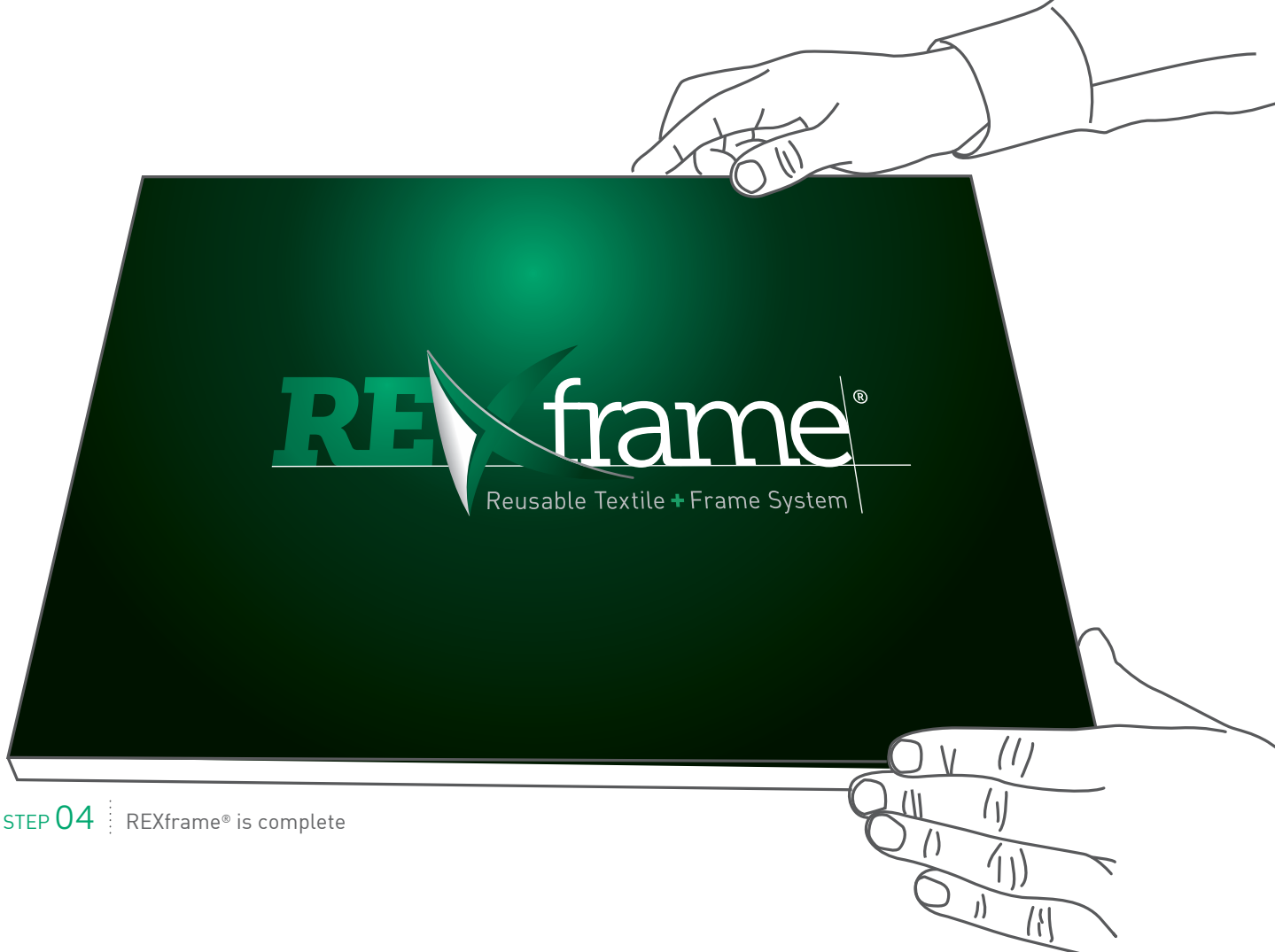
RX-330
TRANSFORMER | RX-330



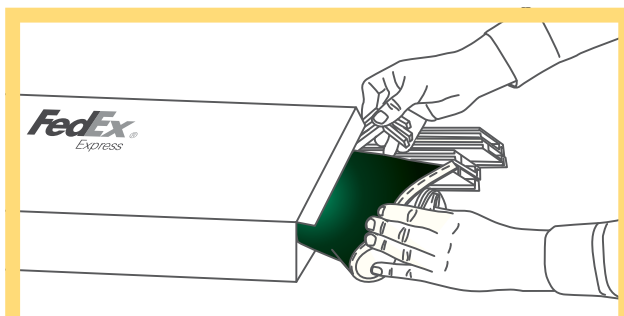
RX-331
TRANSFORMER | RX-331



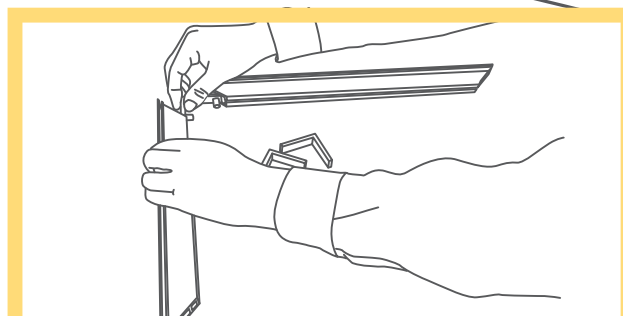
LIGHTING



STEP 04 :: REXframe® is complete



STEP 01 :: REXframe® ready for assembly

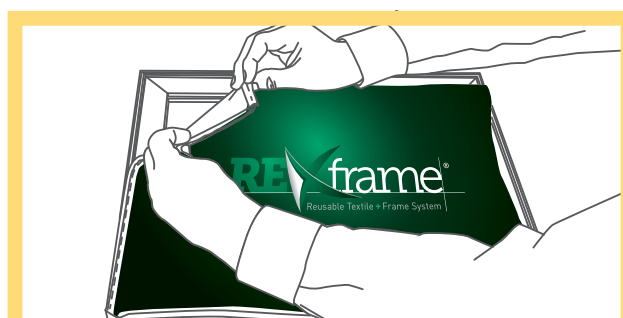


STEP 02 :: Connect corners with elbow joiners

ASSEMBLY

REXframe® profiles can be assembled in just a few steps.

With step by step instructions for all profiles, including REXframe® tools to assist you with construction, we've taken the thinking out of it.



STEP 03 :: Simply push rubber welt into frame groove



GALLERY | 19



www.REXframe.com